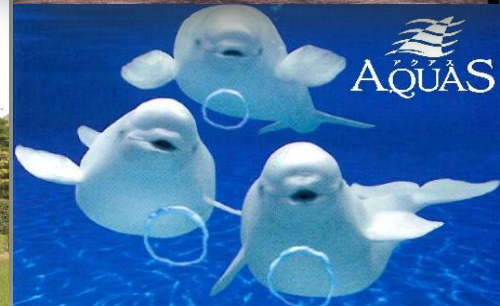
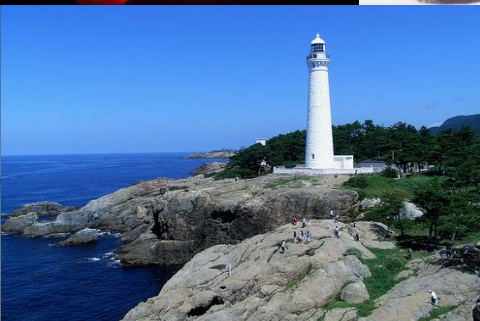


# \*Shimane prefecture

Location, Climate, Geology, Mt. Sanbe, Izumo taisha, Iwami ginzan...





Izumo region  
Iwami region  
Oki region

8 cities  
10 towns  
1 village

## Location

Shimane prefecture is situated on the Sea of Japan side of the Chugoku region. Because of its mountainous landscape, rice farming is done mostly in the Izumo. Another major landform is the Shimane peninsula. The peninsula is located across on the Sea of Japan from Izumo to Sakaiminato, which apparently is located in Tottori prefecture. Also, the peninsula created two sea water lakes Lake Shinji and Nakaumi. The island of Daikon is located in Nakaumi.

Most major cities are located either on the seaside, or along a river. One-third of the prefecture's population is concentrated in the Izumo-Matsue area. Otherwise, over two-thirds of the population is on the coastline. The reason is that the Chugoku mountains make the land inland harder to inhabit.

The capital, Matsue, has the smallest population out of all the 47 prefectural capitals. Shimane has also the largest percentage of the elderly. The province had an estimated 743 centenarians per million inhabitants in September 2010, the highest ratio in Japan.



Izumo region  
Iwami region  
Oki region

8 cities  
10 towns  
1 village

## Location

Shimane prefecture is situated on the Sea of Japan side of the Chugoku region. Because of its mountainous landscape, rice farming is done mostly in the Izumo. Another major landform is the Shimane peninsula. The peninsula is located across on the Sea of Japan from Izumo to Sakaiminato, which apparently is located in Tottori prefecture. Also, the peninsula created two sea water lakes Lake Shinji and Nakaumi. The island of Daikon is located in Nakaumi.

Most major cities are located either on the seaside, or along a river. One-third of the prefecture's population is concentrated in the Izumo-Matsue area. Otherwise, over two-thirds of the population is on the coastline. The reason is that the Chugoku mountains make the land inland harder to inhabit.

The capital, Matsue, has the smallest population out of all the 47 prefectural capitals. Shimane has also the largest percentage of the elderly. The province had an estimated 743 centenarians per million inhabitants in September 2010, the highest ratio in Japan.



Izumo region  
Iwami region  
Oki region

8 cities  
10 towns  
1 village

## Location

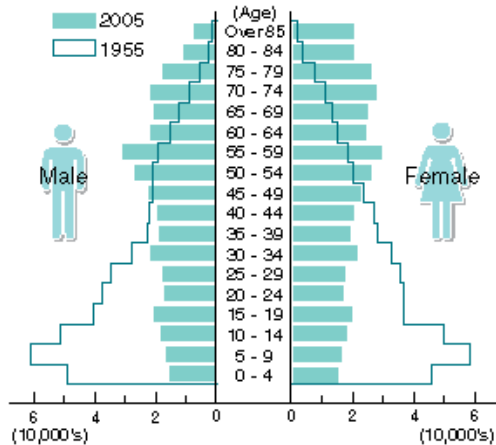
Shimane prefecture is situated on the Sea of Japan side of the Chugoku region. Because of its mountainous landscape, rice farming is done mostly in the Izumo. Another major landform is the Shimane peninsula. The peninsula is located across on the Sea of Japan from Izumo to Sakaiminato, which apparently is located in Tottori prefecture. Also, the peninsula created two sea water lakes Lake Shinji and Nakaumi. The island of Daikon is located in Nakaumi.

Most major cities are located either on the seaside, or along a river. One-third of the prefecture's population is concentrated in the Izumo-Matsue area. Otherwise, over two-thirds of the population is on the coastline. The reason is that the Chugoku mountains make the land inland harder to inhabit.

The capital, Matsue, has the smallest population out of all the 47 prefectural capitals. Shimane has also the largest percentage of the elderly. The province had an estimated 743 centenarians per million inhabitants in September 2010, the highest ratio in Japan.

# Shimane prefecture...

Country: Japan / Region: Chūgoku / Island: Honshū



Population by Age

Area: **6,707.29km<sup>2</sup>**

Population (Dec 1, 2010): **714,982**

Population Density: **110.6people/km<sup>2</sup>**

Prefectural per capita Income: **2,387,000yen**

Senior High School Entrance Rate: **98.0%**

University Entrance Rate: **43.2%**

Number of Doctors at Medical Facilities: **238 per hundred thousand people**

(National: 201.0 per hundred thousand people)

(Area rank 18<sup>th</sup> /47)

(Rank 46<sup>th</sup> /47)

(National: 338.1people/km<sup>2</sup>)

(National: 2,950,000yen)

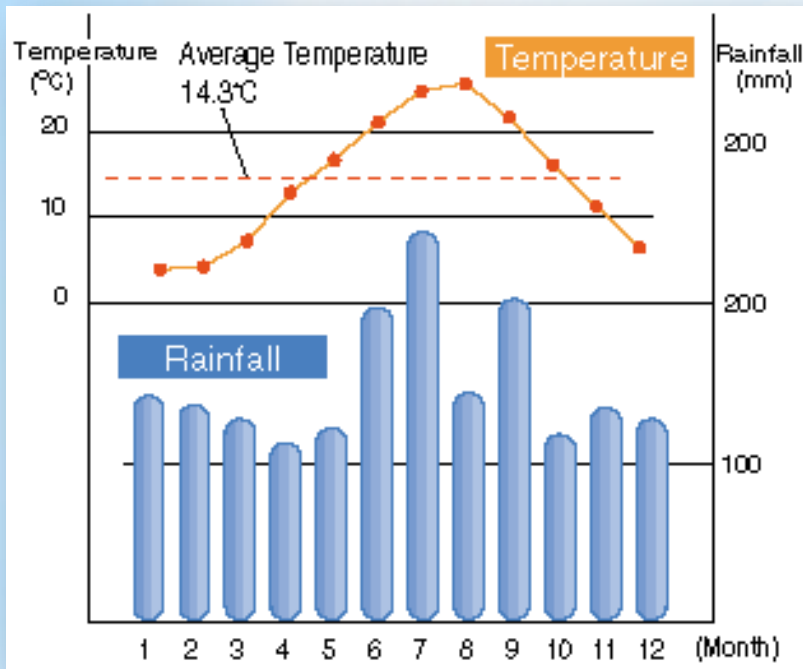
(National: 97.6%)

(National: 47.3%)

Tottori Prefecture

Tottori Prefecture

# Climate...



Summer

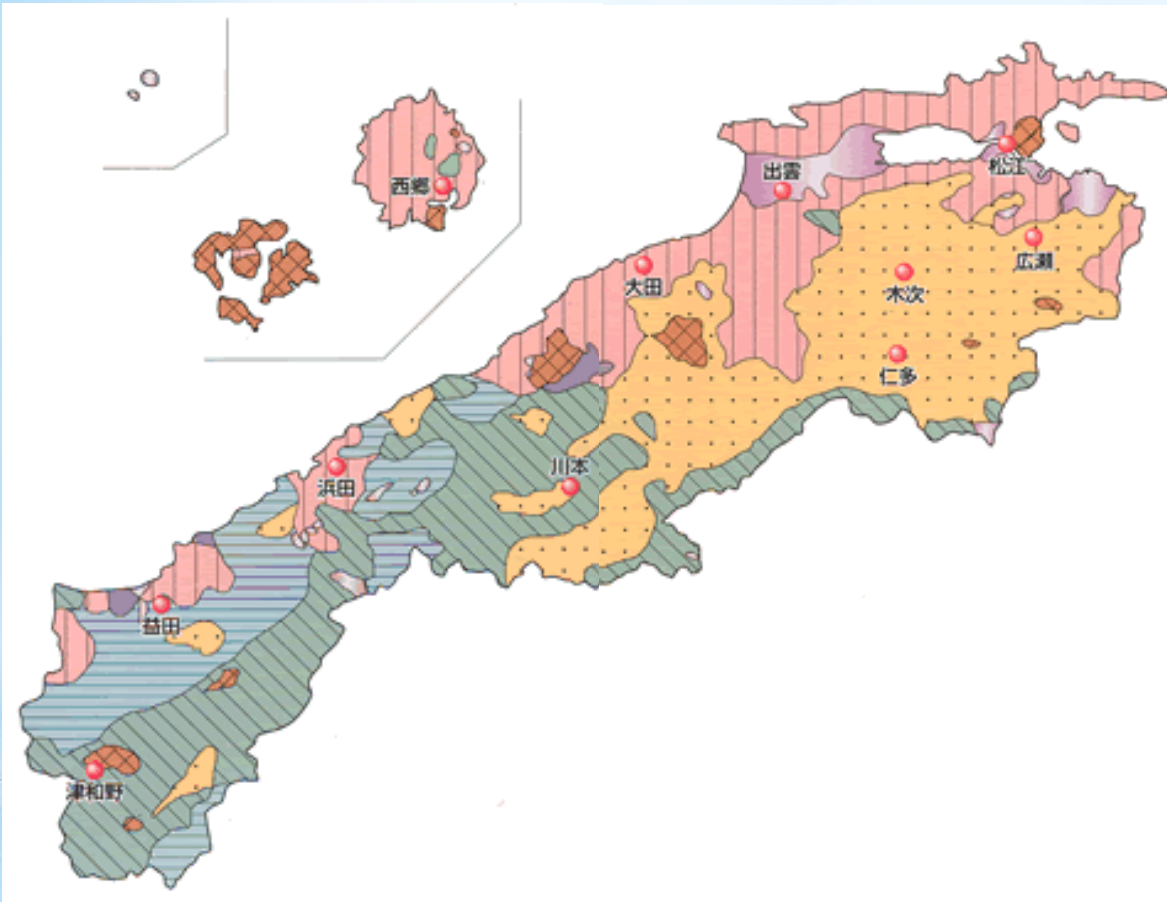


Heavy snow fall last winter in Matsue

(Jan,2011)


The prefecture has a temperate climate. Winter is cloudy with a little snow, and summer is humid. The average annual temperature is 14.3 degrees Celsius. It rains almost every day in the rainy season, from June to mid-July. The highest average monthly temperature occurs in August with 26.3 degrees Celsius. The average annual precipitation is 1799 millimeters, higher than Tokyo's 1467 mm.

# Geological map



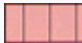
Holocene:  Alluvium

Pleistocene:

 Volcanic or clastic rocks

 Conglomerate or sand stone

Neogene:

 Volcanic or clastic rocks

Sedimentary rock

Cretaceous:

 Granite

 Rhyolite, Andesite, Clastic

Permian, Carboniferous:

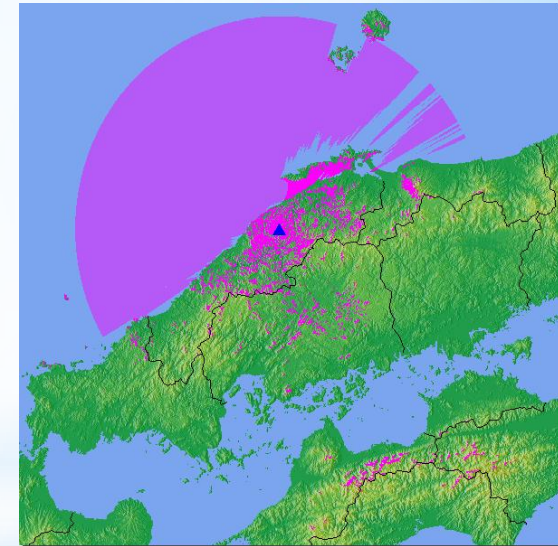
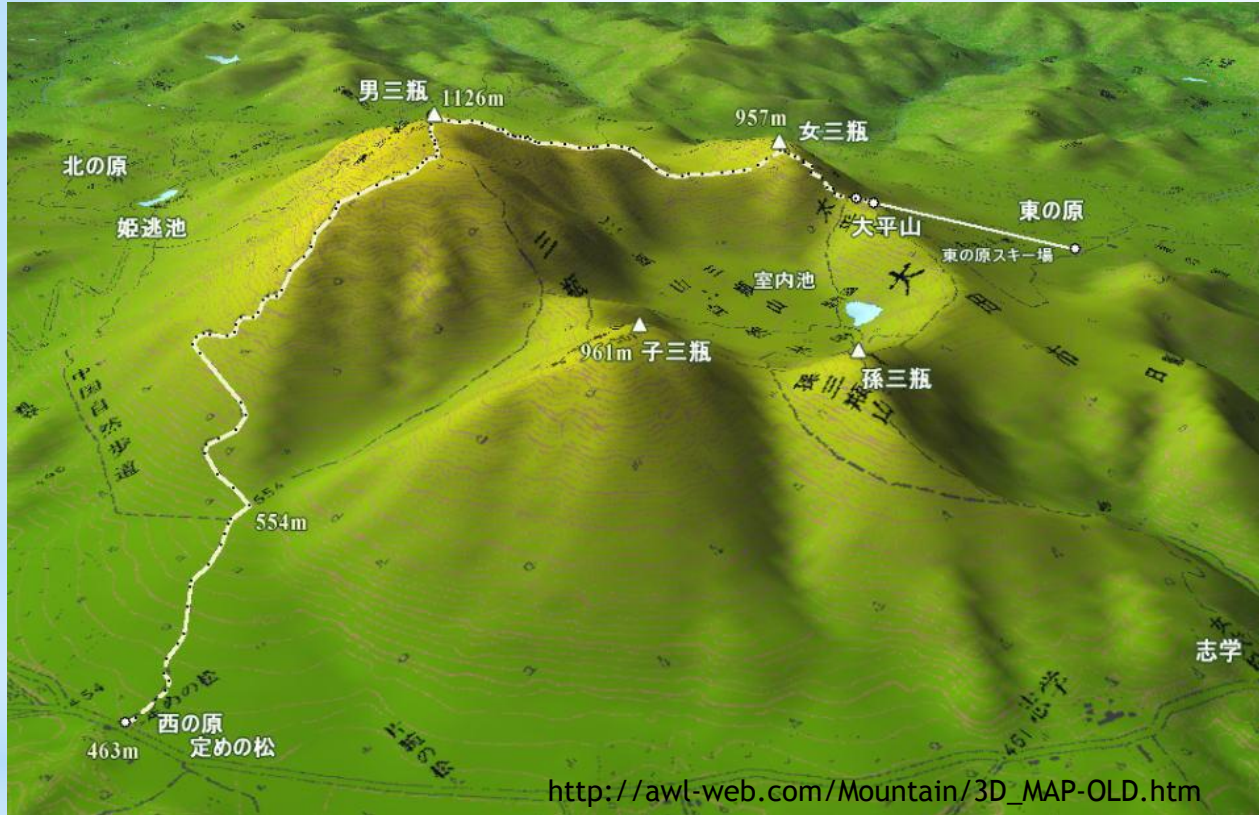
 Schist, Clay slate

Precambrian:

 Gneiss



# \* Mt. Sanbe (1126m)



"Sanbe-san", defined as an "active volcano" in 2003, is a mountain located under the belt of the "Daisen Volcano Range" in the middle of Shimane. Surrounded by the peaks of several mountains including its main peak "Osanbe" or "Male Sanbe" at 1,126m (3,753 ft.) in altitude, it features a volcanic pond, the original source of the hot spring of "Sanbe Onsen", located at the foot of the mountain.

# \* Izumo Taisha Shrines



"Izumo Taisha" or its official name, "Izumo Oyashiro", both meaning "Grand Shrines in Izumo", is the second oldest and largest Shinto shrine following "Ise Jingu" in Mie prefecture.

The latest reconstruction of the main 25m (83ft.) high shrine was made in 1744, after consecutive renovations from its original foundation with the height from 50m (167 ft.) according to the Chronicles of Japan written in the 8th Century.

It is deemed as a holy place as many as eight million gods from across Japan visit throughout a week in November, a period known in this area as "Kami-arizuki" ("Month of the Gods") whilst other area call the period "Kami-nazuki" ("Month of no Gods").

# \* Iwami Ginzan Silver Mine



The Iwami Ginzan (石見銀山, “Silver Mountain of Iwami”) was a silver mine in the city of Ōda, Shimane Prefecture, on the main island of Honshū, Japan. It was added to the World Heritage List in 2007.

It was developed in 1526 by Kamiya Jutei a Japanese merchant. It reached its peak production in the early 17th century of approximately 38 tons of silver a year which was then a third of world production.

Silver from the mine was used widely for coins. It was later secured by fences and barricaded by pine trees. Yamabuki Castle was built in the centre of the complex. Silver production from the mine fell in the nineteenth century as it had trouble competing with mines elsewhere and it was eventually closed.



# Reference

- \* <http://www.kankou-shimane.com/en>
- \* <http://www1.pref.shimane.lg.jp/contents/kokusai/kokusai-e/>
- \* <http://www.pref.shimane.lg.jp/>
- \* <http://ja.wikipedia.org/wiki/%E5%B3%B6%E6%A0%B9%E7%9C%8C>



Adachi Bijutukan



Mt. Daisen

\* **Matsue city**



Peony (Island Daikon)

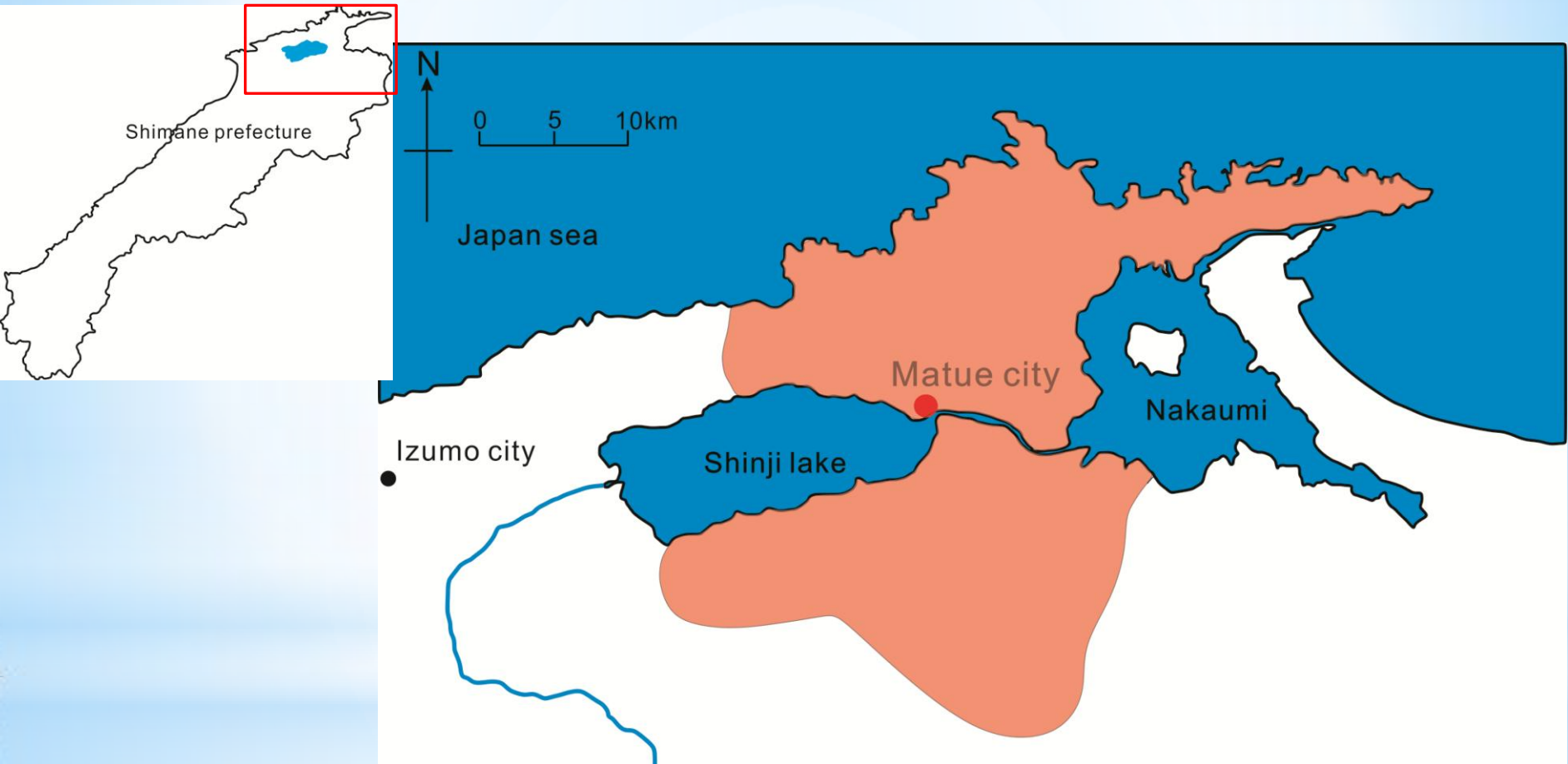


Camellia (Yaegaki shrine)

The tourist attraction in Matsue city

# \* Location map

The prefectural capital of Shimane



Matsue city lies in the eastern part of Shimane prefecture. Matsue city is 57,300 square kilometers in area and has a population of about 20,8000.

# \*Shinji lake



Brackish water lake

Area:79.1km<sup>2</sup>

Circumference: 47km

Maximum depth: 6.4m

Average depth: 4.5m

The corbicula is a special product of this lake.  
This place was selected a place of scenic beauty.



# \* Matsue castle



# \*Yaegaki shrine



People are deifying Susanoo-no-mikoto and Inatahime.  
They are man and wife who were involved/mentioned in the Izumo myth.  
This site where they took up residence in a new house.



samurai residence



Miho shrine



Prefectural art museum



Pleasure boat



Hot spring



Annual function